

# ILLUCENT LINEAR INTEGRAL 4' PERFORMANCE

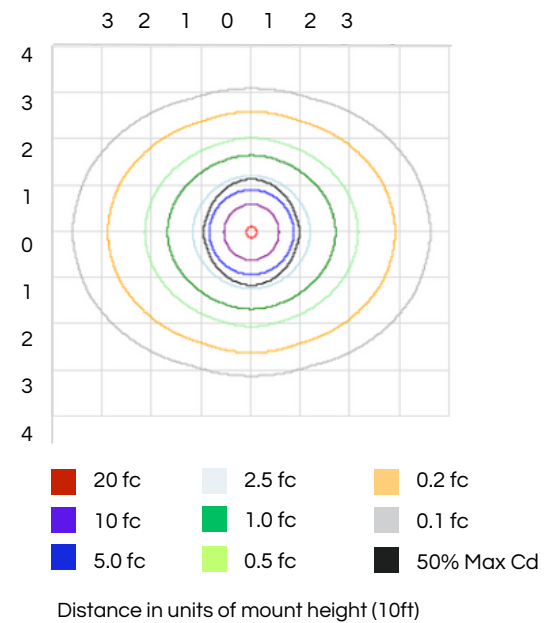


LUMENS	WATTS	LM/W	CCT (K)	CRI
6734.5	40	162.04	4000	80

## INTENSITY SUMMARY (candlepower)

ANGLE	0° ALONG	90° ACROSS
0	2071	2071
15	1939	1902
30	1589	1461
45	1132	1024
60	675	757
75	275	523
90	4	375
105	59	381
120	82	357
135	182	325
150	217	272
165	234	215
180	238	238

## ISOFOOTCANDLE PLOT

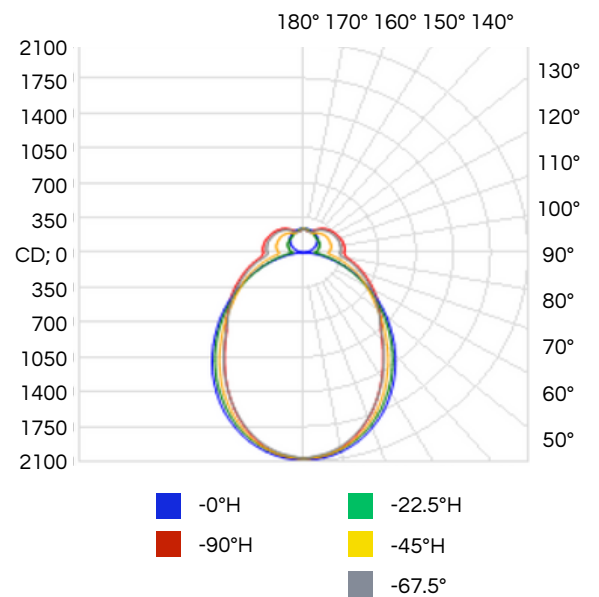


## ILLUMINANCE AT A DISTANCE

MOUNTED HEIGHT	CENTER BEAM fc	BEAM WIDTH	
1.7'	717	3.9	3.3
3.3'	190	7.6	6.4
5.0'	82.8	11.6	9.6
6.7'	46.1	15.5	12.9
8.3'	30.1	19.2	16
10.0'	20.7	23.2	19.3

■ Vertical 98.4°  
■ Horizontal 87.9°

## POLAR CANDELA DISTRIBUTION



## ZONAL LUMEN SUMMARY

ZONE	LUMENS	LUMINAIRE
0-30	1506.3	22.4%
0-40	2368.5	35.2%
0-60	3935.0	58.4%
0-90	5217.1	77.5%
90-180	1517.4	22.5%
0-180	6734.5	100%

# ILLUCCENT LINEAR REMOTE STATIC CIRCADIAN 4' PERFORMANCE



LUMENS	WATTS	LM/W	CCT (K)	CRI
5203.2	39.57	131.5	5000	97.7

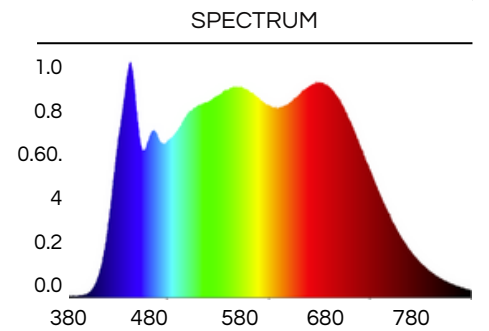
CCT	MR Value			CAF Value			CS Value 300 LUX Eye Illuminance		
	LANTANA	Natural Light	Difference	LANTANA	Natural Light	Difference	LANTANA	Natural Light	Difference
5000K	0.945	0.934	1.2%	0.744	0.759	-2.0%	0.341	0.337	1.2%
6500K	1.093	1.079	1.3%	0.898	0.912	-1.5%	0.385	0.391	-1.5%

### INTENSITY SUMMARY (candlepower)

ANGLE	0° ALONG	90° ACROSS
0	1586	1586
15	1507	1459
30	1248	1126
45	901	794
60	537	584
75	210	401
90	3	286
105	45	296
120	99	277
135	143	252
150	171	212
165	184	189
180	187	187

### ZONAL LUMEN SUMMARY

ZONE	LUMENS	LUMINAIRE
0-30	1154.7	22.2%
0-40	1817.7	34.9%
0-60	3024.9	58.1%
0-90	4011.8	77.1%
90-180	1191.4	22.9%
0-180	5203.2	100.0%

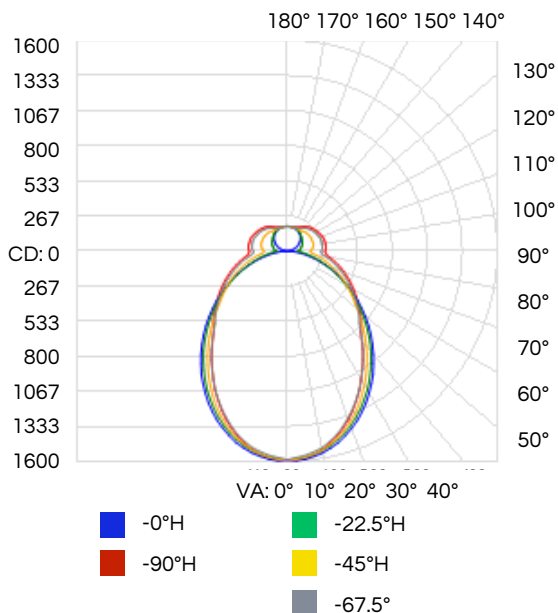


### ILLUMINANCE AT A DISTANCE

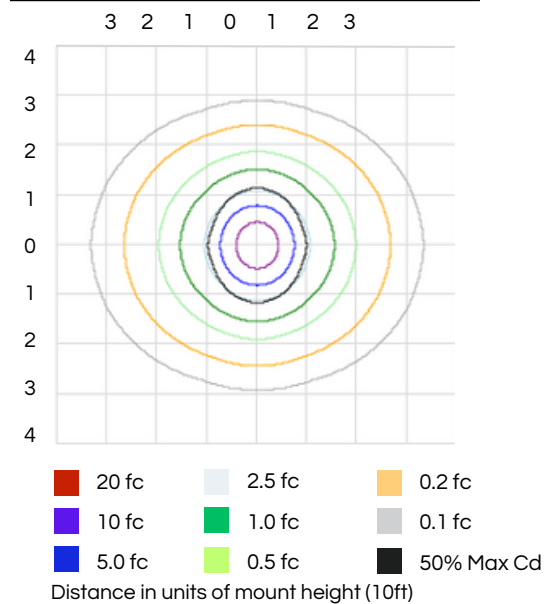
MOUNTED HEIGHT	CENTER BEAM fc	BEAM WIDTH	
1.7'	549	3.9'	3.3'
3.3'	146	7.7'	6.5'
5.0'	63.4	11.6'	9.9'
6.7'	53.3	15.5'	13.2'
8.3'	23.0	19.2'	16.4'
10.0'	15.9	23.2'	19.7'

Vertical 98.4° Horizontal 89.1°

### POLAR CANDELA DISTRIBUTION



### ISOFOOTCANDLE PLOT



Revised: July 14, 2023

LANTANA LED  
114 Sansome St. Suite 1320  
San Francisco, CA 94104

415-814-4500  
sales@lantanaled.com  
m  
www.lantanaled.com



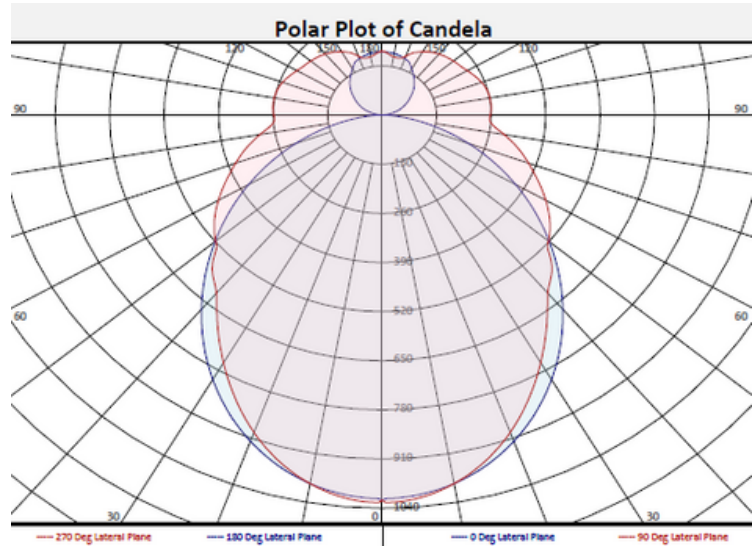
Specifications subject to change without notice.  
Visit [lantanaled.com](http://lantanaled.com) for the most current specifications.

# ILLUCENT LINEAR INTEGRAL TUNABLE WHITE 4' PERFORMANCE



LUMENS	WATTS	LM/W	CCT (K)	CRI
3830.8	41.97	91.3	5000	97.7

- Input Voltage (VAC) 120 V
- Input Current 0.3537 A
- Input Power 41.96 W
- Frequency 60 Hz
- Power Factor 0.989
- Current THD 8.5%
- Luminous Flux 3830.8 Lumens
- Total Efficacy 91.3 Lm/W
- Downward Flux 2822.8 Lumens
- Downward Flux 73.7% of Total



## ZONAL FLUX SUMMARY

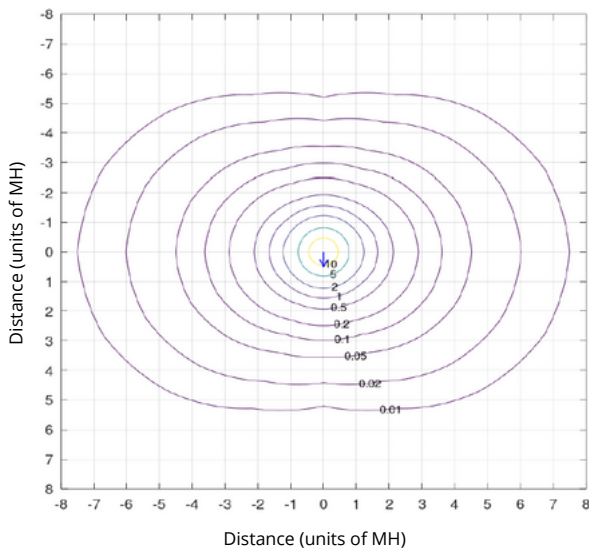
Zone (Deg Vert)	Flux (Lumens)	% of Total	Zone (Deg Vert)	Flux (Lumens)	% of Total	Zone (Deg Vert)	Flux (Lumens)	% of Total
0-10	95.8	2.5	90-100	168.7	4.4	0-20	363.9	9.5
10-20	268.1	7.0	100-110	172.4	4.5	0-30	753.3	19.7
20-30	389.3	10.2	110-120	162.1	4.2	0-40	1198	31.3
30-40	444.4	11.6	120-130	144.8	3.8	0-60	2045	53.4
40-50	442.8	11.6	130-140	125.8	3.3	0-80	2634	69.0
50-60	404.7	10.6	14-150	101.2	2.6	10-90	2727	71.2
60-70	340.6	8.9	150+-160	73.4	1.9	20-50	1277	33.3
70-80	257.4	6.7	160-170	44.1	1.2	40-90	1625	42.4
80-90	179.6	4.7	170-180	15.5	0.4	60-90	777.6	20.3
0-90	2823	73.7	90-180	1008	26.3	0-180	3831	100

## AVERAGE LUMINANCE (cd/m )

HEIGHT (ft)	CENTER BEAM (fc)	0-180° (ft)	90-270° (ft)	0° (ft)	45° (ft)	90° (ft)
6.0	28.3	7.11	6.72	28.3	7.11	6.72
8.0	15.9	9.48	8.97	15.9	9.48	8.97
10.0	10.2	11.85	11.21	10.2	11.85	11.21
12.0	7.1	14.22	13.45	7.1	14.22	13.45
14.0	5.2	16.59	15.69	5.2	16.59	15.69
16.0	4.0	18.96	17.93	4.0	18.96	17.93

# ILLUCENT LINEAR INTEGRAL TUNABLE WHITE COLOR TUNING

Color Tuning	100%	75%	50%	25%	0%	Min Value	Max Value
Luminous Flux (Lm)	377.2	3826.3	3805.5	3438.5	3272.5	3272.5	3826.3
Electrical Power (W)	44.42	42.8	41.97	42.56	43.76	41.97	44.42
Lum Efficacy (Lm/W)	83.5	89.4	90.7	80.8	74.8	74.8	90.7
CCT (K)	6460	5343	4072	3134	2841	2841	6460
Duv	0.0028	-0.0007	-0.0036	-0.0026	-0.0006	-0.0036	0.0028
TM-30 Rf	86	88	89	92	93	86	93
TM-30 Rg	95	96	97	99	99	95	99
TM-30 Rcs, h1	-5%	-4%	-3%	-3%	-4%	-5%	-3%
TM-3- Rf, h1	87	89	89	92	92	87	92
CRI Ra	92	94	95	95	95	92	95
R9	72	82	86	75	66	66	86
Chromaticity (x,y)	(0.3135, 0.3291)	(0.3361, 0.3429)	(0.3750, 0.6357)	(0.4477, 0.4059)	(0.4477, 0.4509)		
Chromaticity (u', v')	(0.1984, 0.4685)	(0.2087, 0.4790)	(0.2259, 0.4958)	(0.2567, 0.5237)	(0.2567, 0.5237)		



## ISO-FOOTCANDLE LINES OF HORIZONTAL ILLUMINATION

The isofootcandle values shown in the plot left are based on a mounting height of  $h = 8.0$  feet. Grid values show multiples of mounting height. The isoilluminance contour lines are expressed in units of footcandles. The values expressed are based on the direct light from a single unit without the contribution of room reflections.

