

LANTANA LED

EDGE SQUARE LINEAR

SPECIFICATION



Sleek square-profile linear lighting with multiple power and emergency options, perfect for offices, schools, and retail environments.



Efficacy Up to: 152.29 Lm/W

Total Output: 13,706

Max Watt: 90

CRI: 80, 90

CCT: 2700K-6500K

UGR: 23 4H/8H

Lifetime: TM 21 L90>71,000

Power Type:

- Class 2 Integral Line-Voltage 120/277V
- Onboard Emergency Battery Backup
- Remote Distributed Low Voltage
- Power over Ethernet

Ambient Operating Temp:

- -20°C to 55°C Integral
- 0°C to 50°C Integral Emergency
- -30°C to 70°C Remote/PoE

Mounting:

- Pendant
- Surface
- Rigid Stem (Unpowered)
- Unistrut (w/wo clip & bracket)
- Custom Angle Bracket

Warranty: 5-Year, extendable to 10 years w/wo driver replacement

Additional Features

- High Output Driver
- Replaceable Driver
- 0-10V Dimming Down to 1%
- Withstands High Heat Environments
- Slim Profile to Fit Tight Spaces
- Optional Sensors
- Available in White or Black

Certifications & Standards

- UL 924: Emergency
- UL 1598: Luminaires
- UL 2108: Low-Voltage
- UL Certified for Elevated Ambient Operating Temperatures
- IDCA Grade 2 Certified
- TAA

Applications

- Education
- Commercial Office
- Hospitality
- Retail
- Data Centers
- Hot Aisle Containment
- Suitable for Damp Locations

Environmental:

- 100% Recycled Extruded Aluminum
- Recyclable Acrylic
- Title 24 Compliant
- EPD Smart Certified

EDGE SQUARE LINEAR

ORDERING INFORMATION

Series/Type	Power	Size	Mounting
ESLN- Edge Square Linear	I- Integral IEM- Integral EM R- Remote POE- PoE	4- Four Foot 8- Eight Foot	P- Pendant RS- Rigid Stem* (unpowered) U- Unistrut UC- Unistrut Clip* UCB- Unistrut Clip and Bracket* S- Surface 45B- 45° Bracket* #B- Custom Angle Bracket*
	Integral Emergency includes onboard emergency battery backup. Remote requires a distributed low-voltage driver unit (RDU) or an alternative DC power source. Sold separately.		Enter angle for custom angle bracket #B

Optics	Distribution	Lumen Output
- NA	- NA	L#- L40-70 4' Std L75-L90 4' HO* L65-L120 8' Std L125-L140 8' HO*

Consult Performance for Lumen Tables with corresponding wattage, and nominal and delivered lumens for SKU.

Adaptive	CCT	CRI	Cord	Cord Color
- NA	27- 2700K 30- 3000K 35- 3500K 40- 4000K 50- 5000K 65- 6500K	80- 80+ CRI 90- 90+ CRI	N- None 3- No Dim 5- Dim 3E- No Dim/EM On 4E- No Dim-EM On/Off 5E- Dim EM On 6E- Dim EM On/Off	N- None W- White B- Black S- Silver Braided

Feed	Finish	End Cap	Sensors*
N- None TFC- Top Center TFE- Top End SF- Side	WPC- White Powder Coat BPC- Black Powder Coat*	WP- White Plastic BP- Black Plastic*	JD- JDRF Autonomy Sensor LU- Lutron Athena Wireless Node WT- Wattstopper FSP-202 LD- LANTANA Dip Switch NL- nLight PIR Sensors CU- Current NXSMP LM- LANTANA Microwave

Project: _____ Date: _____

Part Number: _____ Qty: _____

Notes: _____

Sensor includes installation of sensor and sensor end cap. Verify compatibility of emergency and sensor before ordering.

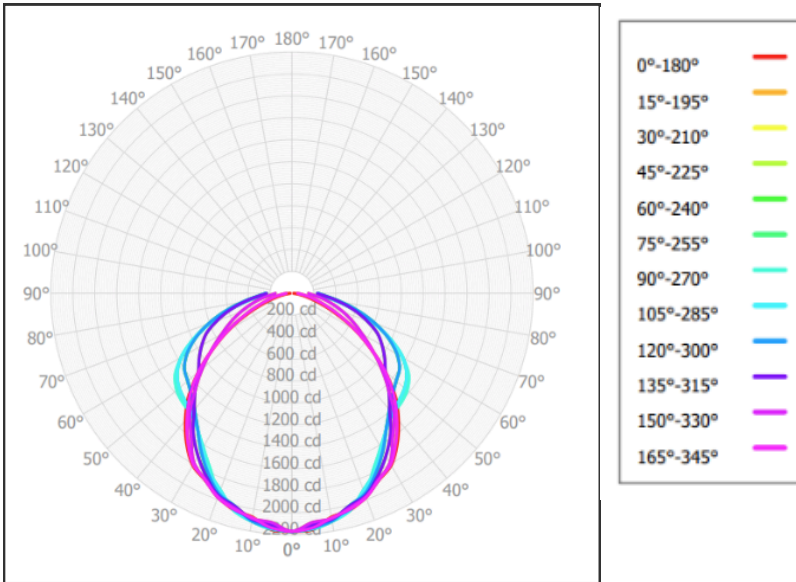
*Additional costs may apply

EDGE SQUARE LINEAR

PERFORMANCE

Delivered Lumens at 4000K 80 CRI

6804.76 Lumens, 40 Input Watts, Efficacy 152.29 Lm/W



CCT (Kelvin)	Multiplier 80 CRI	Efficacy Lm/W	Multiplier 90 CRI	Efficacy Lm/W
2700K	0.91	138.58	0.76	115.74
3000K	0.95	144.68	0.80	121.83
3500K	0.97	147.72	0.82	124.88
4000K	1.00	152.29	0.85	129.45
5000K	1.00	152.29	0.85	129.45
5700K	1.00	152.29	0.85	129.45
6500K	0.99	150.77	0.85	129.45

Standard Output				
Size	SKU	Nominal	Watts	Delivered
4'	L40-	4000	26	3960
	L45-	4500	29	4416
	L50-	5000	32	4873
	L55-	5500	36	5482
	L60-	6000	39	5939
8'	L65-	6500	42	6396
	L70-	7000	45	6853
	L75-	7500	49	7462
	L80-	8000	52	7919
	L85-	8500	55	8376
	L90-	9000	59	8985
	L95-	9500	62	9442
	L100-	10000	65	9899
	L105-	10500	68	10356
	L110-	11000	72	10965
	L115-	11500	75	11422
	L120-	12000	78	11879

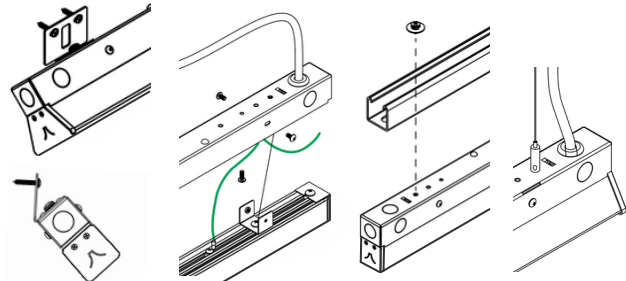
High Output				
Size	SKU	Nominal	Watts	Delivered
4' HO	L65-	6500	42	6396
	L70-	7000	45	6853
	L75-	7500	49	7462
	L80-	8000	52	7919
	L85-	8500	55	8376
	L90-	9000	59	8985
	L95-	9500	62	9442
8' HO	L130-	12500	82	12488
	L135-	13000	85	12945
	L140-	13500	88	13402
	L145-	14000	90	13706

EDGE SQUARE LINEAR

MOUNTING & DIMENSIONS

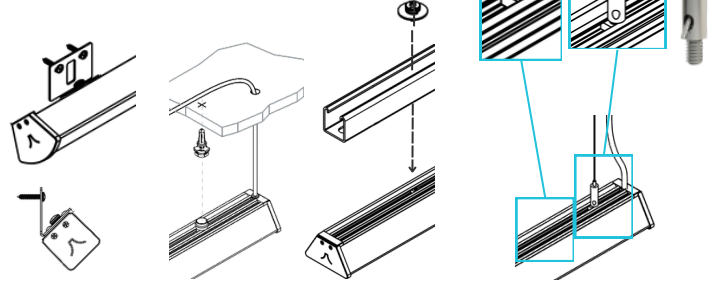
Edge Asymmetric and Edge Tri-Flat Linears Shown

Integral



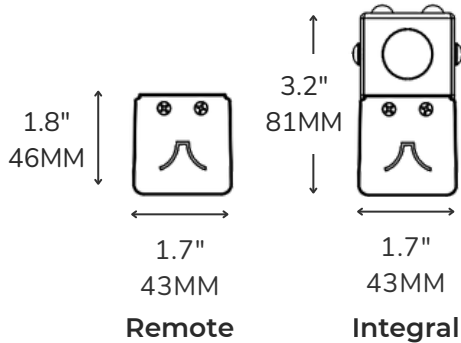
Angle Bracket Surface Unistrut Pendant

Remote



Angle Bracket Surface Unistrut Pendant

Fig 1. Sliding channel nut(s) allows easier adjustment and alignment.
 Fig 2. Sliding nut with adjustable grippers for easy leveling.



FIXTURE SIZE	LENGTH		WIDTH		HEIGHT		WEIGHT	
	IN	MM	IN	MM	IN	MM	LBS	KG
Remote 4 ft.	47.1	1196	1.7	43	1.8	46	3.85	1.75
Remote 8 ft.	93.2	2367	1.7	43	1.8	46	7.7	3.49
Integral 4 ft.	47.1	1196	1.7	43	3.2	81	4.85	2.2
Integral 8 ft.	93.2	2367	1.7	43	3.2	81	9.7	4.4

