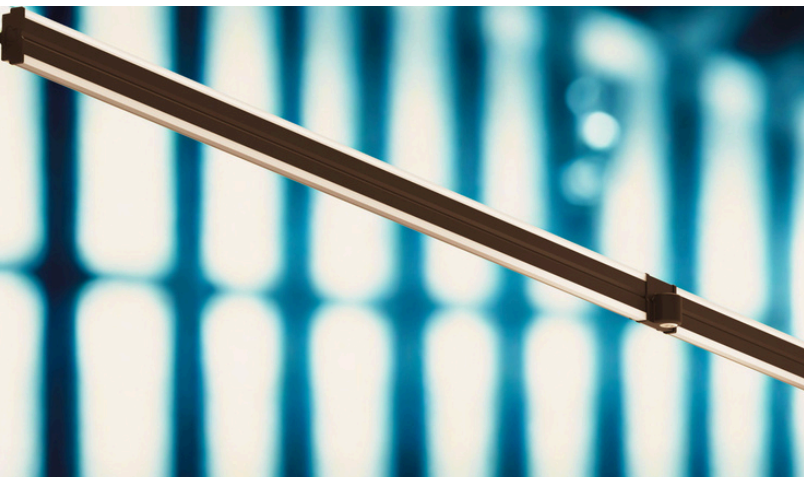


LANTANA LED

NEOTERIC TWIN LINEAR

SPECIFICATION



The Neoteric Twin Linear features independent up and downlight for layered illumination and design flexibility. Typically wall-mounted or installed on unistrut to highlight racks, it can also mount vertically as a striking sconce.



Efficacy Up to: 127.7 Lm/W

Total Output: 11,493

Max Watt: 90

CRI: 80, 90, 97

CCT: 2700K-6500K

UGR: 10.2-18.8 4H/8H

Warranty: 10-Year

Lifetime: TM 21 L90>71,000

Power Type:

- Class 2 Integral Line-Voltage 120/277V
- Onboard Emergency Battery Backup
- Remote Distributed Low Voltage

Ambient Operating Temp:

- Remote: -30°C to 50°C
- Integral: -20°C to 50°C
- Integral Emergency: 0°C to 50°C

Mounting:

- Recessed
- Unistrut
- Surface / Wall

Warranty: 10-Year, upgradeable to include drivers

Additional Features

- Single or Dual Channel Up and Down Light with Split Optics
- Compatible with Hot Aisle Containment.
- Crafted from High-Quality Recyclable Materials.
- Designed for Wall-Mount Applications with Hidden Hardware.
- Rapid Installation on Unistrut with Quick-Snap Functionality.
- Continuous Run from 9 to 100'

Certifications & Standards

- UL 1598: Luminaires
- UL 2108: Low-Voltage
- UL 924: Emergency
- ADA Compliant
- TAA

Applications

- Education
- Commercial Office
- Hospitality
- Retail
- Data Centers
- Hot Aisle Containment
- Suitable for Damp Locations

Environmental:

- 100% Recycled Extruded Aluminum
- Recyclable Acrylic
- Title 24 Compliant
- End of Life Recycling Available

NEOTERIC TWIN LINEAR

ORDERING INFORMATION

Series/Type	Power	Size	Mounting

NTLN- Neoteric Twin Linear

- I-** Integral
- IEM-** Integral Emergency
- R-** Remote

- #-** 1'-8'
- 53-** 5 Foot 3 Inches
- CR#-** Continuous Run

- R-** Recessed
- U-** Unistrut
- S-** Surface Wall

IEM includes onboard emergency battery backup.
Remote requires a distributed low-voltage driver unit (RDU) or an alternative DC power source. Sold separately.

For #- Indicate length from 1' - 8' in one foot increments.
Indicate number of feet after CR. 9' to 100' maximum segments 38
CR not available with Remote

Optics	Distribution	Lumen Output

- 50-** 50 Down / 50 Up
- 75-** 75 Down / 25 Up
- 25-** 25 Down / 75 Up

- S-** Single Channel
- D-** Dual Channel*

- L#-** L10-L105 1'-8' Std
- L110-L115 8' HO*
- CRL#** Continuous Run Lumens per Foot

See Feed and Optics Reference

Consult Performance for Lumen Tables with corresponding wattage, and nominal and delivered lumens for SKU.
See Continuous Run for CRL SKUs.

Adaptive	CCT	CRI	Cord	Cord Color

- SC-** Static Circadian*
- DC-** Dynamic Circadian*
- TW-** Tunable White*
- NA-** None

- 27-** 2700K
- 30-** 3000K
- 35-** 3500K
- 40-** 4000K
- 50-** 5000K
- 65-** 6500K

- 80-** 80+ CRI
- 90-** 90+ CRI
- 97-** 97+ CRI*

- 3-** No Dim
- 5-** Dim
- 3E-** No Dim/EM On
- 4E-** No Dim-EM On/Off
- 5E-** Dim EM On
- 6E-** Dim EM On/Off

- W-** White
- B-** Black
- S-** Silver Braided

SC and DC use 97 CRI
Choose CCT for delivery, DC and TW can be adjusted in the field.
See performance for CCT and the corresponding CS value.

Feed	Finish	End Cap	Sensors*

- BFC-** Back Center
- BFL-** Back Left
- BFR-** Back Right
- LFE-** Left End
- RFE-** Right End

- CA-** Clear Anodized Aluminum
- BA-** Black Anodized Aluminum*
- CU-** Custom Finish*

- WP-** White Plastic
- BP-** Black Plastic
- MB-** Metallic Black
- MS-** Metallic Silver
- CC-** Custom Color

- JD-** JDRF Autonomy Sensor
- LU-** Lutron Athena Wireless Node
- NXL-** Current NX LMI
- NXH-** Current NX HMO
- WT-** Wattstopper FSP-202
- LD-** LANTANA Dip Switch

See Feed and Optics Reference on page 7

Specify RAL# for Custom Finish. Custom colors and finishes may incur additional charges. Find options at www.Tiger-Coatings.com Metallics & Special Effects Vol. 2

Sensor sold separately. Sensor purchase includes installation of sensor and sensor end cap.
Verify emergency compatibility before ordering.
For NL, call for model options

Project: _____ Date: _____

Part Number: _____ Qty: _____

Notes: _____

*Additional costs may apply

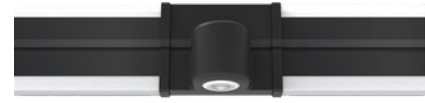
NEOTERIC TWIN LINEAR

CONTINUOUS RUN CONFIGURATION

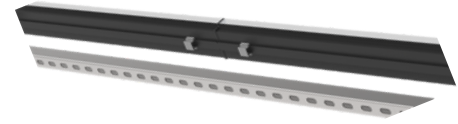
9' - 100' Maximum 38 segments
(based on 120V, 20A, 50W per fixture segment)



Sensor Integration



Easy Mount Clips



Example: 38' with 4' Emergency Section

8	8	4E	8	8
---	---	----	---	---

Enter segment length in feet from **1' - 8'**

Add **E** to the end of the each length that requires emergency

Maximum Total Length = 100' and no more than 38 segments

Segments 1-13

--	--	--	--	--	--	--	--	--	--	--	--	--

Segments 14-26

--	--	--	--	--	--	--	--	--	--	--	--	--

Segments 27-38

--	--	--	--	--	--	--	--	--	--	--	--	--

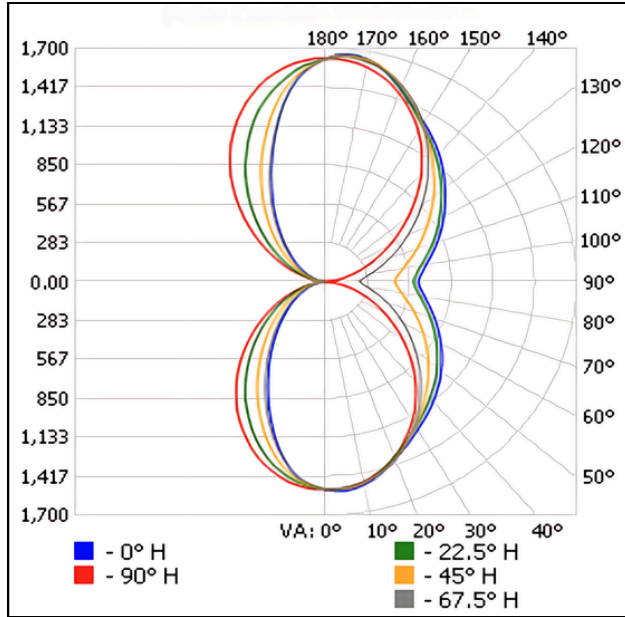
Enter Nominal Lumens per Foot _____ (Between 500-1500)

Fixture Length	Lumens @500/ft CRL50-	Lumens @750/ft CRL75-	Lumens @1000/ft CRL100-	Lumens @1250/ft CRL125-	Lumens @1500/ft CRL150-
1'	500	750	1000	1250	1500
2'	1000	1500	2000	2500	3000
3'	1500	2250	3000	3750	4500
4'	2000	3000	4000	5000	6000
5'	2500	3750	5000	6250	7500
5' 3"	2625	3938	5250	6563	7875
6'	3000	4500	6000	7500	9000
7'	3500	5250	7000	8750	10500
8'	4000	6000	8000	10000	12000

NEOTERIC TWIN LINEAR 50/50

PERFORMANCE

IES file Kelvin	4000K
IES file CCT	80CRI
Efficacy	127.7



ZONE (°)	LUMENS	LUMINAIRE
0-90	3,888.2	49.6%
90-180	3,948.4	50.4%

Multiplier				
CCT	80 CRI	Lm/W	90 CRI	Lm/W
2700K	0.91	116.21	0.76	97.05
3000K	0.95	121.32	0.8	102.16
3500K	0.97	123.87	0.82	104.71
4000K	1.00	127.70	0.85	108.55
5000K	1.00	127.70	0.85	108.55
5700K	1.00	127.70	0.85	108.55
6500K	0.99	126.42	0.85	108.55

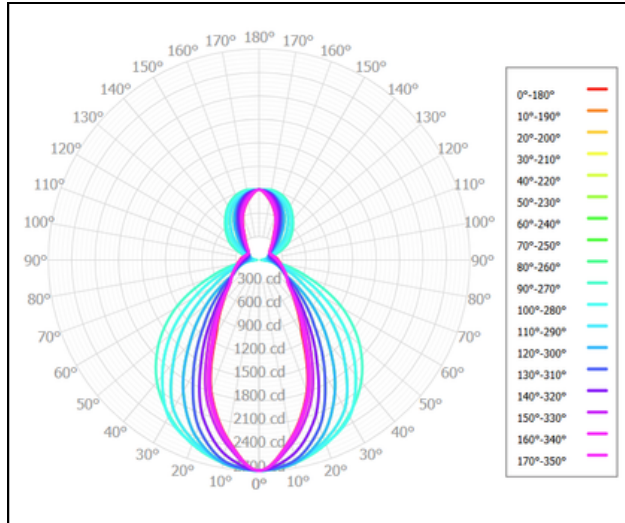
STANDARD OUTPUT				
Size	SKU	Nominal	Watts	Delivered
1'	L10-	1000	7	894
1'-2'	L15-	1500	11	1405
2'-3'	L20-	2000	15	1916
2'-4'	L25-	2500	19	2426
3'-4'	L30-	3000	23	2937
3'-5.25'	L35-	3500	27	3448
4'-6'	L40-	4000	31	3959
4'-6'	L45-	4500	35	4470
4'-6'	L50-	5000	39	4980
4'-7'	L55-	5500	43	5491
5'-8'	L60-	6000	46	5874
5'-8'	L65-	6500	50	6385
5.25'-8'	L70-	7000	54	6896
6'-8'	L75-	7500	58	7407
7'-8'	L80-	8000	62	7917
7'-8'	L85-	8500	66	8428
7'-8'	L90-	9000	70	8939
8'	L95-	9500	74	9450
8'	L100-	10000	78	9961

HIGH OUTPUT				
Size	SKU	Nominal	Watts	Delivered
8' HO	L105-	10500	82	10471
8' HO	L110-	11000	86	10982
8' HO	L115-	11500	90	11493

NEOTERIC TWIN LINEAR 75/25

PERFORMANCE

IES file Kelvin	4000K
IES file CCT	80CRI
Efficacy	127.7



ZONE (°)	LUMENS	LUMINAIRE
0-90	5012.46	72.69%
90-180	1883.14	27.31%

Multiplier				
CCT	80 CRI	Lm/W	90 CRI	Lm/W
2700K	0.91	116.21	0.76	97.05
3000K	0.95	121.32	0.8	102.16
3500K	0.97	123.87	0.82	104.71
4000K	1.00	127.70	0.85	108.55
5000K	1.00	127.70	0.85	108.55
5700K	1.00	127.70	0.85	108.55
6500K	0.99	126.42	0.85	108.55

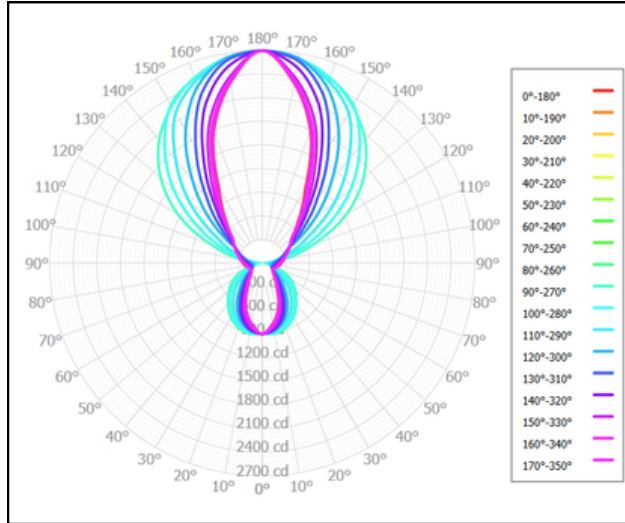
STANDARD OUTPUT				
Size	SKU	Nominal	Watts	Delivered
1'	L10-	1000	7	894
1'-2'	L15-	1500	11	1405
2'-3'	L20-	2000	15	1916
2'-4'	L25-	2500	19	2426
3'-4'	L30-	3000	23	2937
3'-5.25'	L35-	3500	27	3448
4'-6'	L40-	4000	31	3959
4'-6'	L45-	4500	35	4470
4'-6'	L50-	5000	39	4980
4'-7'	L55-	5500	43	5491
5'-8'	L60-	6000	46	5874
5'-8'	L65-	6500	50	6385
5.25'-8'	L70-	7000	54	6896
6'-8'	L75-	7500	58	7407
7'-8'	L80-	8000	62	7917
7'-8'	L85-	8500	66	8428
7'-8'	L90-	9000	70	8939
8'	L95-	9500	74	9450
8'	L100-	10000	78	9961

HIGH OUTPUT				
Size	SKU	Nominal	Watts	Delivered
8' HO	L105-	10500	82	10471
8' HO	L110-	11000	86	10982
8' HO	L115-	11500	90	11493

NEOTERIC TWIN LINEAR-25/75

PERFORMANCE

IES file Kelvin	4000K
IES file CCT	80CRI
Efficacy	127.7



ZONE (°)	LUMENS	LUMINAIRE
0-90	1883.14	27.31%
90-180	5012.45	72.69%

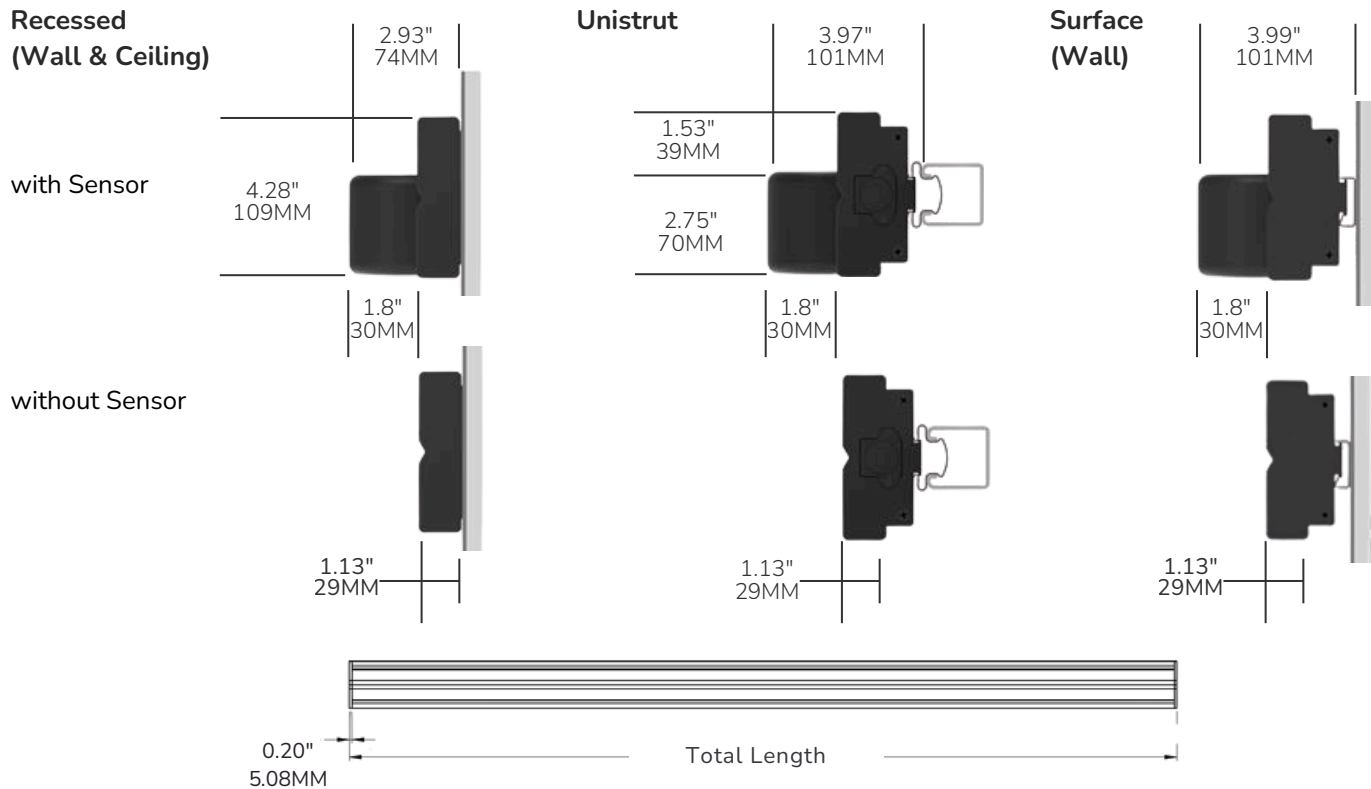
Multiplier				
CCT	80 CRI	Lm/W	90 CRI	Lm/W
2700K	0.91	116.21	0.76	97.05
3000K	0.95	121.32	0.8	102.16
3500K	0.97	123.87	0.82	104.71
4000K	1.00	127.70	0.85	108.55
5000K	1.00	127.70	0.85	108.55
5700K	1.00	127.70	0.85	108.55
6500K	0.99	126.42	0.85	108.55

STANDARD OUTPUT				
Size	SKU	Nominal	Watts	Delivered
1'	L10-	1000	7	894
1'-2'	L15-	1500	11	1405
2'-3'	L20-	2000	15	1916
2'-4'	L25-	2500	19	2426
3'-4'	L30-	3000	23	2937
3'-5.25'	L35-	3500	27	3448
4'-6'	L40-	4000	31	3959
4'-6'	L45-	4500	35	4470
4'-6'	L50-	5000	39	4980
4'-7'	L55-	5500	43	5491
5'-8'	L60-	6000	46	5874
5'-8'	L65-	6500	50	6385
5.25'-8'	L70-	7000	54	6896
6'-8'	L75-	7500	58	7407
7'-8'	L80-	8000	62	7917
7'-8'	L85-	8500	66	8428
7'-8'	L90-	9000	70	8939
8'	L95-	9500	74	9450
8'	L100-	10000	78	9961

HIGH OUTPUT				
Size	SKU	Nominal	Watts	Delivered
8' HO	L105-	10500	82	10471
8' HO	L110-	11000	86	10982
8' HO	L115-	11500	90	11493

NEOTERIC TWIN LINEAR

MOUNTING & DIMENSIONS



TYPE	TOTAL LENGTH		WEIGHT	
	IN	MM	LBS	KG
Integral & Remote	Size in IN + 0.4"	Size in MM + 10.16	1.52 per foot	.69 per foot
Integral Emergency			1.71 per foot	.78 per foot
5' 3" Integral	63.09"	1602	8	3.63
5' 3" Integral Emergency			9	4.08

1' = 12 inches or 304.8MM

FEED AND OPTICS REFERENCE

See feed and optics reference below for part number

